

Comfortable driving

- The 3rd generation of hexahedron ROPS/FOPS cab with **ultimate vision** and **360°** non-blind-area design;
- 5.8kW high-power cooling and heating air conditioner, three-dimensional air duct layout. **At 38°C, the temperature of driving environment can be reduced to 23°C in 30 minutes;**
- The fully sealed **76dB(A)** silent cab minimizes dust entry and provides a quiet and comfortable driving environment;
- **Grammer shock-absorbing seat with headrest and spacious backrest**, with mechanical suspension structure, brings maximum support for long-time driving and reduces fatigue.

Reliable and durable

- Design standard for mining platform, intelligent manufacturing in lighthouse factory, service life of structural parts **>30000h**;
- The 3rd generation of reinforced rear axle, with large wheel-hub bearing and waterwheel lubrication structure, reinforced slewing bearing and chain, NO-SPIN silent differential lock, has a service life increased by **50%**;
- The fully-enclosed rolling disc operating device adapts to sand and gravel, with high slewing accuracy, no need for frequent maintenance, no wearing parts, and a service life **>10000h**.

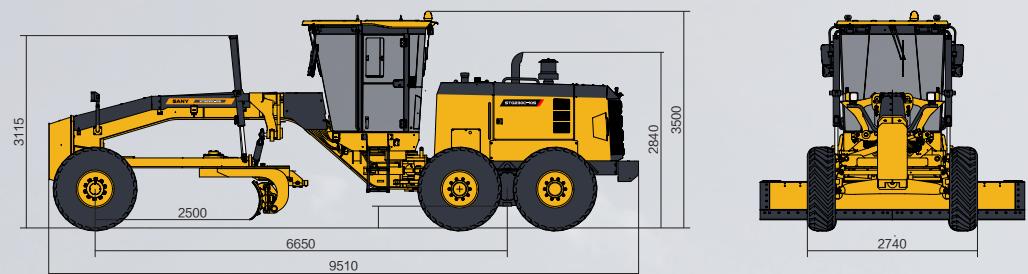


C105 Series

Product parameters

◆ Overall dimension

The following are standard configuration measurements, and the physical items vary depending on the options.



Dimension in mm

Item		ST6230C-10S
Engine		SDEC SC7H Euro V
Rated power/speed (kW/rpm)		177/2200
Dimensions (mm)	Standard configuration: including front and rear counterweights	9510×2740×3500
	Addition: rear ripper	10350×2740×3500
	Addition: front dozer + rear ripper	11230×2740×3500
Operating mass (kg)	Standard configuration: including front and rear counterweights	16800
	Addition: rear ripper	17400
	Addition: front dozer + rear ripper	185000
Forward speed (km/h)		6/10/13/21/27/42
Reverse speed (km/h)		6/13/27
Blade length × chord height (mm)		4270×620 (standard)
Maximum lifting height of blade (mm)		505
Fuel tank volume (L)		400
Volume of hydraulic tank (L)		140



SANY HEAVY INDUSTRY CO., LTD.

Sales Hotline

Service Hotline

Tel: 0086-731-85835199

Tel: 0086-4006098318

Mail: sales@sanyglobal.com

The product configuration (including technical parameters) is subject to change and the delivered actual machine without notice.

Designed and made by the Market Department of Sany Heavy Industry in Mar. 2023.

© Registered trademark, counterfeiting sued. Sany Heavy Industry Co., Ltd. All rights reserved.
 “SE” and “SANY” logos are the trademarks or registered trademarks of Sany Heavy Industry Co., Ltd. in the world. Without the written consent of Sany Heavy Industry Co., Ltd., any person shall not use the trademarks.

© Printed in China Date: Mar. 2023

www.sanyglobal.com



GRADER

STG230C-10S

CE CERTIFIED HEAVY-HAUL ALL-ROUNDER – SDEC EURO V



Product highlights

Extreme control

- **Load-sensing hydraulic system** with flow distributed as required, supporting synchronous operation of multiple handles, less heating and low energy consumption;
- The operating force of the handle is **<20N**. It is labor-saving in operation and realizes accurate control;
- **One-click landing of blade**, dead weight floating, light steering system, blade buffer floating (optional), efficient and reliable snow removal and mine road maintenance.

Efficient and energy-saving

- Low-speed, large-torque heavy-duty power, and three-stage air filter and three-stage fuel filter matched with accurate fuel injection technology ensure excellent performance and low emission;
 - Optimal matching power transmission system realizes the best matching of traction and operation speed, with the operation efficiency **10%** higher than that of similar products in the industry;
 - With power adaptive intelligent matching technology, the customized power curve can automatically match different working gears. **Cruise control** and **ECO modes** can be set with one button to achieve maximum working efficiency and minimum fuel consumption.
- 



Grader C10S Series

STG230C-10S

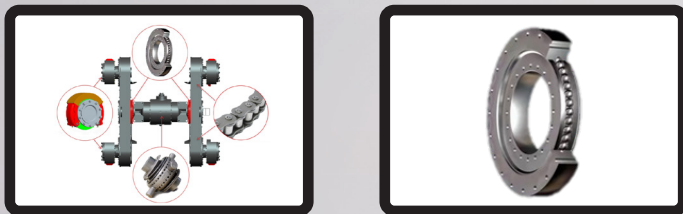
1 Power adaptive intelligent matching technology

- ◆ The customized power curve is automatically matched with different working gears to reduce operating fuel consumption.
- ◆ The ECO mode can be selected with one button according to the working conditions, so as to achieve maximum working efficiency and minimum fuel consumption.



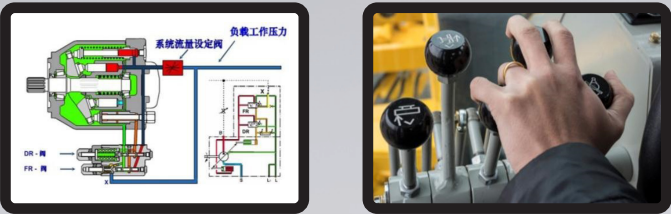
2 3rd generation reinforced slewing bearing/drive axle

- ◆ Reinforced 3-seal slewing bearing (patented), with **a maintenance period of > 1000h**;
- ◆ Extended wheel-hub bearing, waterwheel lubrication structure (patent), reinforced chain and NO-SPIN silent differential lock increase the **service life by 50%**.



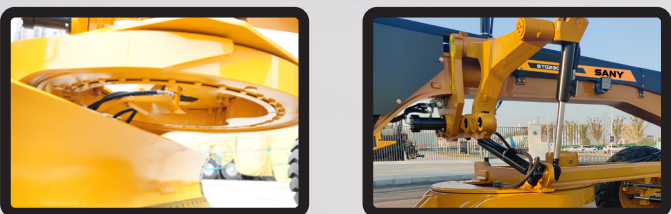
3 Load sensing hydraulic system (PPPC)

- ◆ 107 displacement variable displacement pump and electric proportional pressure compensation multi-way valve ensure that the flow, pressure and power demand are equipped as required. The hydraulic system features less heating and low energy consumption.
- ◆ The operating force of the handle is **< 20N**. It is accurate in control and can realize multi-handle synchronous operation.



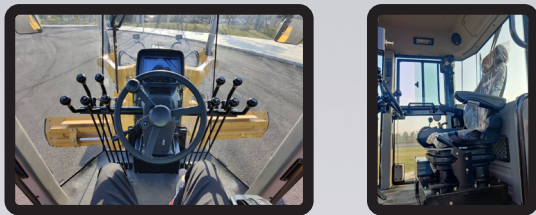
4 Fully-enclosed rolling disc heavy-duty operating device

- ◆ The fully-enclosed rolling disc operating device adapts to sand and gravel, with high slewing accuracy. It has a grease filling cycle of 200 ~ 300h, without wearing parts, and its **service life is > 10000h**.
- ◆ Four-link swing frame, long blade extension distance, versatile in operation, **505mm lifting height**, excellent trafficability.



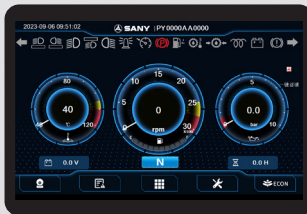
5 Quiet and comfortable driving

- ◆ The 3rd generation of **76dB(A) ultimate-vision ROPS/FOPS hexahedron cab**, with 360° non-blind-area design and optimal sealing performance in the industry, minimizes dust entry and provides a quiet comfortable driving environment.
- ◆ 5.8kW high-power cooling and heating air conditioner, three-dimensional air duct layout. **At 38°C, the temperature of driving environment can be reduced to 23°C in 30 minutes.**
- ◆ **Grammer shock-absorbing seat with headrest and spacious backrest**, with mechanical suspension structure, brings maximum support for long-time driving and reduces fatigue.
- ◆ Luxury interior, left and right push windows, radio, cab fan, USB charging, storage box, etc.



6 3rd generation intelligent display and control system

- ◆ **7-inch touch screen**, thin film buttons and integrated reversing camera are available in seven languages: Chinese, Russian, English, French, Spanish, Portuguese and Indonesian.
- ◆ Intelligent cloud system, real-time monitoring of complete machine status, intuitive and automatic prompt for fault self-diagnosis and regular maintenance.



Service environment

- ◆ Standard configuration: no intake preheating system + normal temperature battery, suitable for an ambient temperature of above **-10°C** ;
- ◆ Intake preheating system + normal temperature battery are installed to meet an ambient temperature of above **-20°C** ;
- ◆ If the ambient temperature is lower than **-20°C** , please consult SANY technicians.

Product Optional

Module	Standard	Optional/additional
Engine	SDEC 177kW Euro V	/
Gearbox	ZF 6WG-200	/
Rear axle	Reinforced: disc brake + single-row slewing bearing + high-strength chain	Special mine type: wet brake + double-row slewing bearing + reinforced chain
Air filter system	Standard type	Desert type (oil bath)
Cab	Ultimate vision hexahedron (including beacon light)	/
Seat	Grammer mechanical suspension type (including seat belt)	/
Swing frame	Four link (including electro-hydraulic bolt)	/
Worm wheel case	Overload protection	/
Blade	14R(4270mm)	12R(3660mm)
Cutting edge	Standard wear-resistant type	Mine wear-resistant type
Wheel	17.5-25(tubed)	Desert type (vacuum tire)
Wheel fender	Rear wheel fender	/
Operating tools	/	Front dozer plate/front ripper rake/rear ripper
Intelligent blade	Snow removal scenario: one-click cutting + dead weight floating	Mining and other special scenarios: buffer floating

Notes:
1. Standard operating mass includes standard configuration of 17.5-25 tires, full load fuel, coolant, lubricant and 75kg operator.
2. Due to the continuous update of technology and products, parameters are subject to modification without notice. In case of any discrepancy between samples and physical objects, the physical object shall prevail.

